

FREE \$200 AND WIN, WIN, WIN!!!

Please note that all information is provided 'as is' and no guarantees are given whatsoever as to the amount of profit you will make if you use this system. Neither the seller of this system, the publisher or any affiliates can be held responsible for any profits or losses from following this information, all betting involves an element of risk and you should never bet with money you cannot afford to lose.

Before giving you any instructions to follow, I would like you to take a moment to read through the following information, so you can get a better picture of what we are trying to achieve for you!

Please remember, as it says on my advert, you **MUST** follow these instructions to the letter, that is the whole point of this system – any deviation, no matter how small or trivial can spell disaster! Do not even attempt anything in this package unless you can click where I tell you and bet where I tell you – that is how this system works. Please ensure that you read **ALL THE WAY THROUGH** this text **BEFORE** attempting **ANY** betting. It will not take long and it is very important!

All of the odds on a Roulette table are based on the “law of averages” minus one or two points. This way, the Casino can only gain money from you playing the table. Until Now. We have blown away the stupid “Law of Averages” and turned it to the players’ advantage. Yes, surely the Casino will “Cotton on” eventually, but when is a different matter. If you think about it, how many people are there playing on on-line Casinos? You wouldn’t believe me if I told you! We are talking millions of people. Compare that to the number of people using the following system and it’ll be something like one in 3 million! Every Casino has an “Acceptable Loss”, therefore giving us all plenty of time to win some serious money before they change the gaming rules!

Now, for the details on my system.

Firstly, we have tried and tested numerous on-line Casinos, and come to realise the same as other ‘System Writers’ have – All systems work best in one particular Casino. For this reason, we seriously recommend that You first play the system in this Casino.

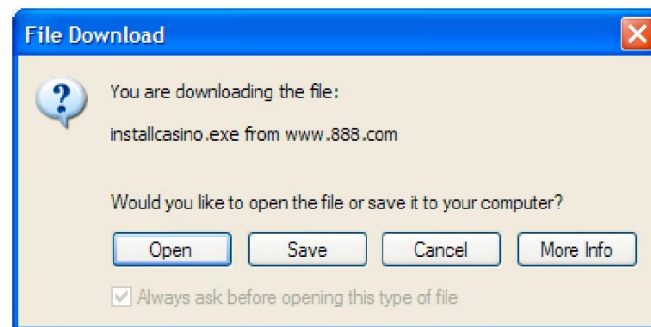
Click Below to download the software Now

[Click Here to download the software](#)

Or Type <http://playcasino.premopia.com> into your browser.



Now click on 'PLAY CASINO'..



A box like the one above will appear on your screen, you now need to click on 'Open' (or 'Run' on some computers).

Don't worry this casino is the largest online casino in the world, so there is absolutely no chance they are going to give your computer any viruses! They have almost the same amount of users as Hotmail!



On some computers you will then need to click 'Next' to download your money making software (Some computers will do it automatically).



Now click on 'Money Play' you can click on practice play and practice the system if you want but since you do not have to bet any of your own money and can only win with this system I recommend you go straight to the action!

A screenshot of the 'Money Play Registration' form within the 'Casino On Net' software. The form is titled 'Money Play Registration' and includes a link for 'Already a Member?'. It contains several input fields: 'Preferred username', 'First Name', 'Last Name', 'Email', 'Age', 'Gender' (with radio buttons for 'M' and 'F'), 'Address', 'City', 'Country' (a dropdown menu labeled 'Select from list'), 'State' (a dropdown menu), 'Zip Code', and 'Phone'. At the bottom of the form is a checkbox labeled 'I ACCEPT THE Terms & Conditions'. Below the form are 'Cancel', 'Submit Registration', and 'Help' buttons. The background of the software interface is visible, showing the same green theme and game icons as the previous screenshot. The top of the window shows the 'Casino On Net' logo and the URL 'www.888.com'. The bottom of the window has a navigation bar with links for 'Players' Club', 'Settings', 'Contact Us', 'Help', 'My Account History', and a 'Logout' button.

Register as a real player, again if your worried about spam or something similar then don't be! The company will send you the odd email with details of special offers but you can unsubscribe at any time – This really is easy money!

The image shows a login interface for 'Casino Money Play'. At the top left is a logo with 'CASINO' and 'ONNET' and a diamond icon. To its right is the title 'Money Play' in a stylized green font. Below the title are three input fields: 'Username' with 'example' entered, 'Password' with 'xxxxxxx' entered, and 'Nickname' with 'example' entered and '(optional)' to its right. A large blue 'LOGIN' button is centered below the fields. At the bottom, there are two links: 'New User? Sign Up Here!' and 'Forgot your Password?'. At the very bottom are two circular icons with 'Cancel' and 'Help' labels below them.

CASINO ONNET Money Play

Username example

Password xxxxxx

Nickname example (optional)

LOGIN

[New User? Sign Up Here!](#) [Forgot your Password?](#)

Cancel Help

So register, click on 'Submit' and log in using the log in name and password you registered with.

Now you have a Casino account, you will need to transfer money into your new account. I advise that to make the most of my betting system you transfer \$200 (£107) to the account – don't worry, you will be able to transfer it straight back out again within a few minutes! If this seems too much, then I recommend that you transfer no less than \$88 (£46). Again, you will be able to withdraw your original deposit within a few minutes! (READ PAGE 8 BEFORE DEPOSITING ANY MONEY)

The System:

Now, this system is based on betting on the Low/Middle/High fields ONLY. You simply bet on the same one, with only a slight rise in stake each time, until it wins. I know that some of you will be thinking "oh no, that sounds dangerous..." but please, read on...

These fields have a 1 in 3 chance of winning according to the "Law of Averages" and give a return of 2 to 1. By following our system, you only need 1 in 17 to be a winner! (Depending on your balance) This way, you have more than quadrupled the "Law of Averages" and given yourself an unbelievable advantage!

First of all, you will need to understand what these bets are:

1) This is a bet on “Low”. You win if any number from 1-12 (Inclusive) comes in.



2) This is a bet on “Middle”. You win if any number from 13-24 (Inclusive) comes in.



3) This is a bet on “High”. You win if any number from 25-36 (Inclusive) comes in.



If you follow our instructions, you will gain between \$1 and \$3 for every winning number, regardless of how many losing ones you have had!

Now, print off the attached spread sheet document, and keep it next to you, with a pen. The document should look something like this:

0	5	10	15	20	L	M	H	0
25	30	35	40	45				
50	55	60	65	70				
75	80	85	90	95				

The idea with this is to keep a precise record of exactly how the table you are betting on is ‘Running’. There is no point to betting at random, so please, be accurate with this. What you need to do is every time you spin the wheel, record whether a ‘Low,’ (M) ‘Middle’ (M) or ‘High’ (H) number drops in.

For example, if you are on a table and spin the wheel ten times, and the following numbers drop in: 04, 11, 36, 14, 20, 25, 02, 33, 13, 16, your table would look like this:

[illegible]

50	55	60	65	70	
75	80	85	90	95	

When you begin to play roulette, DO NOT place ANY bets at all. Patience is the key now. Keep spinning the wheel and recording what numbers drop in on your table. What you are waiting for is a consecutive run where 1 of the sections of number has not come in for 7 spins.

What I mean is this – say the following numbers now drop into the above table: 36, 30, 23 and 17, . The table now looks like this:

0	5	10	15	20	L	M	H	O
L M H M M	H L H M M	H H H M						
25	30	35	40	45				
50	55	60	65	70				
75	80	85	90	95				

A ‘Low’ number (L) hasn’t dropped in for Seven consecutive spins. It’s time to start betting! This could be either High (H), Middle (M) or Low (L) – you start betting when any one of the three have not come up for 7 spins

Bet Number	Stake	Gain
1	\$1	+\$2
2	\$2	+\$3
3	\$3	+\$2
4	\$4	+\$2
5	\$6	+\$2
6	\$9	+\$2
7	\$13	+\$1
8	\$20	+\$2
9	\$30	+\$2
10	\$45	+\$2
11	\$67	+\$1

So as you can see, once high, middle or low hasn’t come up for seven spins you keep on betting on it until it does.

Increase you stakes as shown in the table to the left under the ‘Stakes’ column and you will only lose if a high/middle or low section doesn’t come up for 17 spins! You have more than quadrupled the law of averages!!

Remember to keep on recording what comes up as you are betting, you may need to start again on a different section once you have won.

That really is how simple this system is! But, there is still more valuable information to be had so please, check out the next page...

1) To be taken to The Casino site.

[Click Here to download the software](#)

Or Type <http://playcasino.premopia.com> into your browser.

2) Download the software, install it, and then create an account as I have shown in the first section.

3) Deposit money into your Casino On Net account. Make sure that your first deposit is as high as you can possibly manage- up to a limit of \$200 - roughly £105 (Although you can deposit ANY amount you want to below \$200, the choice is yours! To play the system above correctly, \$200 recommended).

Here is exactly how you get the free money to bet with!



Once you have logged into your account and have the software window open in front of you – click on ‘Cashier’ at the bottom left hand corner of the screen.



Click on deposit.

 A screenshot of the 'Casino On Net Cashier' deposit form. The window title is 'Cashier'. The top left has the 'CASINO ON NET' logo and the URL 'www.888.com'. The top right has a 'Private Connection' icon. The left sidebar lists deposit methods: 'Credit Card', 'Deposit by Phone', 'Checking Account' (selected), 'NETELLER', 'FirePay', 'ePassporte', 'ACTeCASH', 'Wire Transfer', 'INSTADEBIT', and 'More Deposit Methods'. The main area is titled 'Checking Account' and contains fields for 'Amount' (set to \$200), 'ABA/Routing #', 'Account #', and 'Check #'. Below these are 'ID Details' fields: 'First Name', 'Last Name', 'Address', 'City', 'State' (dropdown set to 'US Only'), 'ZIP', 'Phone', 'Birth Date' (dropdown), 'Driver License/ID Card', 'Social Security' (with a note '(last 4 digits)'), and 'Issued In' (dropdown set to 'US Only'). There is a checkbox for 'I agree to the Terms and conditions' and a 'Submit' button. The bottom left shows a 'CURRENT BALANCE' of '\$ 00450.00'. The bottom right has 'Back' and 'LOBBY' buttons. A 'News' section on the right mentions a '100% Bonus, up to \$200, on your first deposit!' and a 'Help' section with a 'LIVE HELP' button and a toll-free number '1-800-480-5170'.

I recommend using a credit card for your deposit although you can use a debit card or bank transfer. To use your credit card simply click on 'credit card' enter the details and click 'Submit'



Once done, you will notice that you have twice the amount you deposited in your on-line account! So if you deposited \$200 you will have \$400 dollars in your on-line account.

As a new player you are entitled to play for free, click on roulette and then on the single player game and bet in the following way.

1. Do not bet, record what comes up and wait for 7 of one field NOT coming up.
2. Start to bet on the field that hasn't come up.
3. Increase bet as shown in system table after every LOSE.
4. When you WIN, go back to 1. You have gained profit shown in gain section of table.

Please check the casino's terms and conditions for more information, this really is easy money!

That's it! Get that cash into potential £1000's quickly and easily!!!

Why not check out the other great games available including high payout jackpots!



For blackjack strategies please check your bonus items!



That's all you have to do to get your money - and it really is that simple.

The only way that things will go wrong is if you do not follow the instructions to the exact letter!

Finally – A last few pointers that should help you along the way...

- 1) Try not to spend more than 15-20 minutes at each roulette or blackjack table. I don't know why, but after this amount of time, every table seems to get harder to play.
- 2) Avoid playing between 2-3PM. Again, I don't know why but always at this time the Casinos' seem harder to play.
- 3) DO NOT GET GREEDY! That is the major downfall of most players. Set a target and stick to it. Once reached, walk away. A good target is around \$400 a day, you can of course build with your winnings.
- 4) Only ever bet what you can afford to lose. There is no point going bankrupt in a Casino!
- 5) Be disciplined & most importantly....stick to the rules!